

Que je t'aime

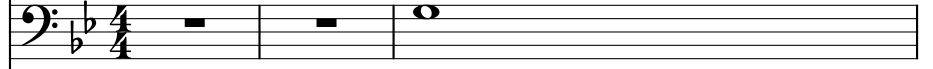
Johnny Hallyday

♩ = 73

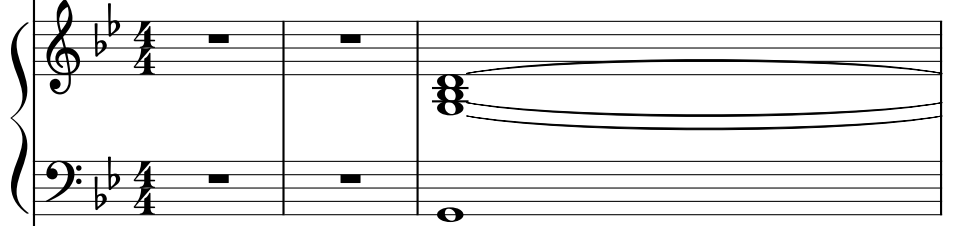
Orgue, Church Organ



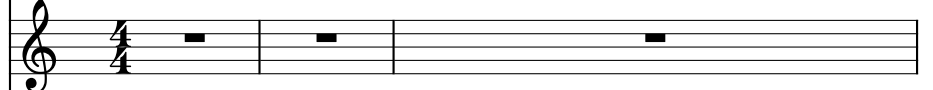
Basse électrique fretless, Fretless Bass



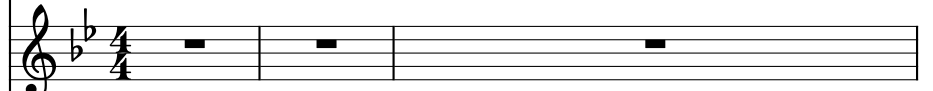
Orgue, Church Organ



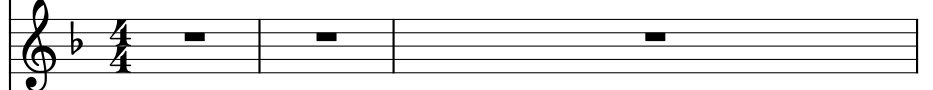
Clarinete en Sib



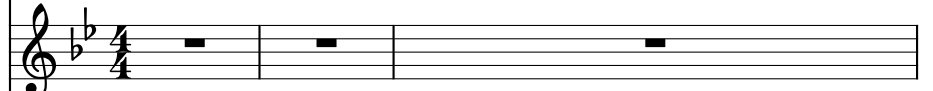
Vuvuzela, Trumpet



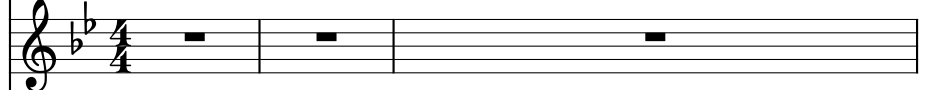
Cor en Fa, French Horn



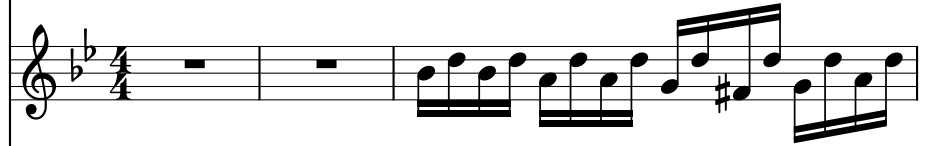
Vuvuzela, Trumpet



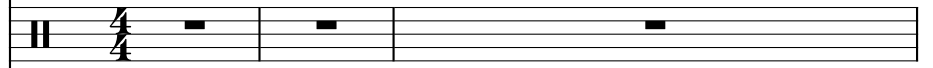
Cuivres, Brass Section



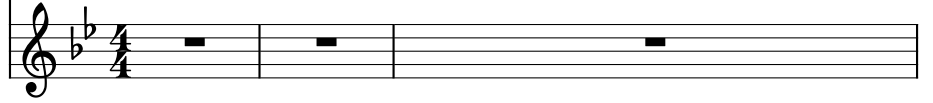
Ukulélé, Acoustic Guitar (nylon)



Batterie, Drums



Xylophone, Xylophone



4

Org.

B. él. Frtl.

Org.

Clar. Sib

Vuv.

Cor Fa

Vuv.

Cui.

Uk.

Bat.

Xyl.

6

Org.

B. él. Frtl.

Org.

Clar. Sib

Vuv.

Cor Fa

Vuv.

Cui.

Uk.

Bat.

Xyl.

Detailed description: This is a page of a musical score, numbered '6' at the top left. It features ten staves for different instruments. The top staff is for an Organ, showing a melodic line with eighth notes in a key of two flats. The second staff is for a Bassoon (B. él. Frtl.), containing a single whole note. The third and fourth staves are for another Organ, with the right hand playing a chord and the left hand playing a whole note. The fifth staff is for a Clarinet in B-flat (Clar. Sib), showing a whole rest. The sixth staff is for a Trumpet (Vuv.), also with a whole rest. The seventh staff is for a Horn in F (Cor Fa), with a whole rest. The eighth staff is for a Trumpet (Vuv.), with a whole rest followed by a trill and a grace note. The ninth staff is for a Cymbal (Cui.), with a whole rest. The tenth staff is for a Ukulele (Uk.), showing a melodic line with eighth notes. The eleventh staff is for a Drum (Bat.), with a double bar line followed by a whole rest and then a rhythmic pattern of eighth notes. The twelfth staff is for a Xylophone (Xyl.), with a whole rest. The key signature for all staves is two flats (B-flat and E-flat).

7

Org.

B. él. Frtl.

Org.

Clar. Sib

Vuv.

Cor Fa

Vuv.

Cui.

Uk.

Bat.

Xyl.

ff

Detailed description: This is a page of a musical score, numbered 7 at the top left. It features ten staves for different instruments. The top staff is for the Organ (Org.) in treble clef, showing a melodic line with eighth and sixteenth notes. The second staff is for the Bassoon (B. él. Frtl.) in bass clef, with a few notes and rests. The third and fourth staves are for another Organ (Org.) in bass clef, with a long, sustained note. The fifth staff is for the Clarinet in B-flat (Clar. Sib) in treble clef, starting with a forte (*ff*) dynamic and playing a melodic line. The sixth, seventh, and eighth staves are for the Vibraphone (Vuv.) in treble clef, showing rests. The ninth staff is for the Ukulele (Uk.) in treble clef, playing a rhythmic accompaniment. The tenth staff is for the Snare Drum (Bat.) in percussion clef, with a few notes. The eleventh staff is for the Xylophone (Xyl.) in treble clef, showing rests. The key signature has two flats (B-flat and E-flat), and the time signature is 4/4.

8

Org.

B. él. Frtl.

Org.

Clar. Sib

Vuv.

Cor Fa

Vuv.

Cui.

Uk.

Bat.

Xyl.

Detailed description: This is a page of a musical score, page 8, for a concert band. The score is written in a key signature of two flats (B-flat and E-flat) and a common time signature. The instruments listed on the left are: Organ (top), Bassoon (B. él. Frtl.), Organ (middle, with a brace), Clarinet in B-flat (Clar. Sib), Trumpet (Vuv.), Horn in F (Cor Fa), Trumpet (Vuv.), Cymbal (Cui.), Ukulele (Uk.), Drum (Bat.), and Xylophone (Xyl.). The Organ part features a melodic line with eighth and sixteenth notes, including a trill. The Bassoon part has a few notes with a grace note. The Clarinet in B-flat part has a melodic line with eighth notes and a grace note. The Ukulele part has a rhythmic pattern of eighth notes. The Drum part has a simple rhythmic pattern with grace notes. The other instruments (Vuv., Cor Fa, Cui., Xyl.) have rests.

10

Org.

B. él. Frtl.

Org.

Clar. Sib

Vuv.

Cor Fa

Vuv.

Cui.

Uk.

Bat.

Xyl.

Detailed description: This is a page of a musical score, page 10, for a concert band or orchestra. The score is written in a key signature of two flats (B-flat major or D-flat minor) and a common time signature. The instruments listed on the left are: Organ (top), Bassoon (B. él. Frtl.), Organ (middle, with two staves), Clarinet in B-flat (Clar. Sib), Flute (Vuv.), Cor Anglais (Cor Fa), Flute (Vuv.), Cymbal (Cui.), Ukulele (Uk.), Snare Drum (Bat.), and Xylophone (Xyl.). The Organ part features a melodic line with eighth-note patterns and some chromaticism. The Bassoon part has a melodic line with a fermata. The Clarinet part has a triplet of eighth notes. The Ukulele part has a rhythmic accompaniment of eighth notes. The Snare Drum part has a simple rhythmic pattern. The Flute, Cor Anglais, and Xylophone parts are currently silent, indicated by a horizontal line with a bar across the staff.

12

Org.

B. él. Frtl.

Org.

Clar. Sib

Vuv.

Cor Fa

Vuv.

Cui.

Uk.

Bat.

Xyl.

Detailed description: This is a page of a musical score, numbered 12 at the top left. It features ten staves for different instruments. The top staff is for the Organ (Org.) in treble clef, showing a melodic line with eighth and sixteenth notes. The second staff is for the Bassoon (B. él. Frtl.) in bass clef, with a few notes and rests. The third staff is for the Organ (Org.) in bass clef, showing a sustained chord. The fourth staff is for the Clarinet in B-flat (Clar. Sib) in treble clef, with a melodic line. The fifth staff is for the Trumpet (Vuv.) in treble clef, with a rest. The sixth staff is for the Horn in F (Cor Fa) in treble clef, with a rest. The seventh staff is for the Trumpet (Vuv.) in treble clef, with a rest. The eighth staff is for the Cymbal (Cui.) in treble clef, with a rest. The ninth staff is for the Ukulele (Uk.) in treble clef, with a melodic line. The tenth staff is for the Drum (Bat.) in percussion clef, with a few notes and rests. The eleventh staff is for the Xylophone (Xyl.) in treble clef, with a rest. The key signature has two flats (B-flat and E-flat), and the time signature is not explicitly shown but appears to be 4/4.

14

Org.

B. él. Frtl.

Org.

Clar. Sib

Vuv.

Cor Fa

Vuv.

Cui.

Uk.

Bat.

Xyl.

Detailed description of the musical score: The score is for a full orchestra and organ. It consists of two measures. The first measure (measures 14-15) features the Organ playing a melodic line in the right hand and a bass line in the left hand. The B. él. Frtl. (Bassoon) plays a melodic line. The Clar. Sib (Clarinet in B-flat) plays a melodic line. The Vuv. (Trumpet) and Cor Fa (Trumpet) play chords. The Uk. (Ukulele) plays a rhythmic pattern. The Bat. (Bass Drum) plays a rhythmic pattern. The Xyl. (Xylophone) is silent. The second measure (measures 16-17) features the Organ playing a sustained chord in the left hand. The B. él. Frtl. plays a melodic line. The Clar. Sib plays a melodic line. The Vuv. and Cui. (Cymbal) play chords. The Uk. plays a rhythmic pattern. The Bat. plays a rhythmic pattern. The Xyl. is silent.

Org.

B. él. Frtl.

Org.

Clar. Sib

Vuv.

Cor Fa

Vuv.

Cui.

Uk.

Bat.

Xyl.

Detailed description: This is a page of a musical score for a concert band or orchestra. The page is numbered 16 at the top left. The score is written for several instruments, each on a separate staff. The instruments listed on the left are: Org. (Organ), B. él. Frtl. (Bassoon), Org. (Organ), Clar. Sib (Clarinet in B-flat), Vuv. (Vibraphone), Cor Fa (Cornet in F), Vuv. (Vibraphone), Cui. (Cymbals), Uk. (Ukulele), Bat. (Bass Drum), and Xyl. (Xylophone). The key signature is one flat (B-flat), and the time signature is 4/4. The Organ parts are mostly rests. The Bassoon part has a melodic line with some slurs. The Clarinet in B-flat part has a rhythmic pattern. The Vibraphone part has a simple rhythmic pattern. The Cornet in F part has a simple rhythmic pattern. The second Vibraphone part has a complex rhythmic pattern with many notes. The Cymbals part has a simple rhythmic pattern. The Ukulele part has a simple rhythmic pattern. The Bass Drum part has a complex rhythmic pattern with many notes. The Xylophone part has a simple rhythmic pattern.

18

Org.

B. él. Frtl.

Org.

Clar. Sib

Vuv.

Cor Fa

Vuv.

Cui.

Uk.

Bat.

Xyl.

3

5

7

3

19

Org.

B. él. Frtl.

Org.

Clar. Sib

Vuv.

Cor Fa

Vuv.

Cui.

Uk.

Bat.

Xyl.

This musical score page, numbered 20, features a variety of instruments. The top staff is for the Organ (Org.) in the right hand, playing a continuous eighth-note melody in a key with two flats and a sharp. The second staff is for the Bassoon (B. él. Frtl.) in the left hand, with a few notes and rests. The third and fourth staves are for the Organ (Org.) in the left hand, playing sustained chords. The fifth staff is for the Clarinet in B-flat (Clar. Sib.), with a few notes and rests. The sixth staff is for the Trumpet (Vuv.), with a few notes and rests. The seventh staff is for the Trombone (Cor Fa), with a few notes and rests. The eighth staff is for the Trumpet (Vuv.), with a few notes and rests. The ninth staff is for the Cymbal (Cui.), with a few notes and rests. The tenth staff is for the Ukulele (Uk.), playing a continuous eighth-note melody in a key with two flats and a sharp. The eleventh staff is for the Drum (Bat.), with a few notes and rests. The twelfth staff is for the Xylophone (Xyl.), with a few notes and rests.

Org.

B. él. Frtl.

Org.

Clar. Sib

Vuv.

Cor Fa

Vuv.

Cui.

Uk.

Bat.

Xyl.

Detailed description: This page of a musical score, numbered 22, features a variety of instruments. At the top, an Organ part plays a continuous eighth-note melody in the treble clef. Below it, a Bassoon (B. él. Frtl.) and another Organ part (in bass clef) provide harmonic support. The Clarinet in B-flat (Clar. Sib) has a melodic line with a triplet of eighth notes. The Ukulele (Uk.) plays a rhythmic accompaniment of eighth notes. The Drum set (Bat.) and Xylophone (Xyl.) parts are mostly silent, indicated by rests. The French Horn (Cor Fa) has a few notes. The two Trumpets (Vuv.) are also silent. The score is written in a key with two flats and a common time signature.

Org.

B. él. Frtl.

Org.

Clar. Sib

Vuv.

Cor Fa

Vuv.

Cui.

Uk.

Bat.

Xyl.

Detailed description: This page of a musical score, numbered 24, features a variety of instruments. The top staff is for the Organ, playing a continuous eighth-note melody in the right hand. Below it is the Bassoon (B. él. Frtl.) with a melodic line. The Organ part continues with a sustained bass line in the left hand. The Clarinet in B-flat (Clar. Sib) has a melodic line with some rests. The Trumpets (Vuv.) and Trombones (Vuv.) are mostly silent. The Horns (Cor Fa) play a rhythmic pattern. The Ukulele (Uk.) plays a rhythmic accompaniment. The Drum (Bat.) and Xylophone (Xyl.) are also mostly silent.

26

Org.

B. él. Frtl.

Org.

Clar. Sib

Vuv.

Cor Fa

Vuv.

Cui.

Uk.

Bat.

Xyl.

Detailed description: This is a page of a musical score, page 26, featuring twelve staves for different instruments. The top staff is for the Organ (Org.) in treble clef, playing a continuous eighth-note melody. The second staff is for the Bassoon (B. él. Frtl.) in bass clef, with a few notes. The third and fourth staves are for the Organ (Org.) in bass clef, showing sustained chords. The fifth staff is for the Clarinet in B-flat (Clar. Sib) in treble clef, with a triplet of eighth notes. The sixth staff is for the Trumpet (Vuv.) in treble clef, with a few notes. The seventh staff is for the Horn in F (Cor Fa) in treble clef, with a few notes. The eighth staff is for the Trumpet (Vuv.) in treble clef, which is mostly silent. The ninth staff is for the Cymbal (Cui.) in treble clef, which is mostly silent. The tenth staff is for the Ukulele (Uk.) in treble clef, playing a rhythmic accompaniment. The eleventh staff is for the Drum (Bat.) in percussion clef, with a few notes. The twelfth staff is for the Xylophone (Xyl.) in treble clef, which is mostly silent. The key signature has two flats (B-flat and E-flat), and the time signature is 4/4.

28

Org.

B. él. Frtl.

Org.

Clar. Sib

Vuv.

Cor Fa

Vuv.

Cui.

Uk.

Bat.

Xyl.

Detailed description: This page of a musical score, numbered 28, contains ten staves for different instruments. The top staff is for the Organ (Org.) in treble clef, playing a melodic line with eighth and sixteenth notes. The second staff is for the Bassoon (B. él. Frtl.) in bass clef, playing a similar melodic line. The third staff is for the Organ (Org.) in bass clef, providing harmonic support with sustained chords. The fourth staff is for the Clarinet in B-flat (Clar. Sib) in treble clef, playing a melodic line with a triplet of eighth notes. The fifth staff is for the Vibraphone (Vuv.) in treble clef, showing mallet patterns and sustained notes. The sixth staff is for the Horn in F (Cor Fa) in treble clef, playing sustained chords. The seventh staff is for the Vibraphone (Vuv.) in bass clef, showing mallet patterns and sustained notes. The eighth staff is for the Cymbal (Cui.) in bass clef, showing mallet patterns and sustained notes. The ninth staff is for the Ukulele (Uk.) in treble clef, playing a melodic line with eighth and sixteenth notes. The tenth staff is for the Snare Drum (Bat.) in bass clef, showing a rhythmic pattern with 'x' marks for snare hits. The eleventh staff is for the Xylophone (Xyl.) in treble clef, showing mallet patterns and sustained notes. The key signature has two flats (B-flat and E-flat), and the time signature is 4/4.

30

Org.

B. él. Frtl.

Org.

Clar. Sib

Vuv.

Cor Fa

Vuv.

Cui.

Uk.

Bat.

Xyl.

Detailed description: This page of a musical score, numbered 30, contains ten staves for different instruments. The top staff is for the Organ (Org.) in treble clef, mostly containing rests. The second staff is for the Bassoon (B. él. Frtl.) in bass clef, featuring a melodic line with eighth and sixteenth notes. The third staff is for the Organ (Org.) in bass clef, with a few notes and rests. The fourth staff is for the Clarinet in B-flat (Clar. Sib) in treble clef, with a melodic line. The fifth staff is for the Violin (Vuv.) in treble clef, with a melodic line. The sixth staff is for the Horn in F (Cor Fa) in bass clef, with a melodic line. The seventh staff is for the Violin (Vuv.) in treble clef, with a complex rhythmic pattern. The eighth staff is for the Trumpet (Cui.) in treble clef, with a complex rhythmic pattern. The ninth staff is for the Ukulele (Uk.) in treble clef, mostly containing rests. The tenth staff is for the Drums (Bat.) in a drum set notation, with various rhythmic patterns. The eleventh staff is for the Xylophone (Xyl.) in treble clef, with a melodic line. The score is in a key signature of two flats (B-flat and E-flat) and a 3/4 time signature. There are several triplets and slurs throughout the score.

Org. (top staff): Treble clef, key signature of two flats, contains a whole rest.

B. él. Frtl. (second staff): Bass clef, key signature of two flats, contains a whole note.

Org. (third and fourth staves): Bass clef, key signature of two flats, contains a whole rest.

Clar. Sib (fifth staff): Treble clef, key signature of two flats, contains a quarter note followed by a fermata.

Vuv. (sixth staff): Treble clef, key signature of two flats, contains a quarter note followed by a fermata.

Cor Fa (seventh staff): Treble clef, key signature of two flats, contains a whole note.

Vuv. (eighth staff): Treble clef, key signature of two flats, contains a quarter note followed by a fermata.

Cui. (ninth staff): Treble clef, key signature of two flats, contains a whole rest.

Uk. (tenth staff): Treble clef, key signature of two flats, contains a whole rest.

Bat. (eleventh staff): Percussion staff with a drum symbol, contains four measures of rhythmic notation.

Xyl. (twelfth staff): Treble clef, key signature of two flats, contains a complex melodic line with triplets and sixteenth notes.

33

Org.

B. él. Frtl.

Org.

Clar. Sib

Vuv.

Cor Fa

Vuv.

Cui.

Uk.

Bat.

Xyl.

Detailed description: This is a page of a musical score, numbered 33. It features ten staves for different instruments. The top staff is for the Organ (Org.) in treble clef, playing a continuous eighth-note melody. The second staff is for the B. él. Frtl. (Bassoon) in bass clef, playing a single whole note. The third and fourth staves are for another Organ (Org.) in bass clef, playing sustained chords. The fifth staff is for the Clar. Sib (Clarinet in B-flat) in treble clef, with a whole rest. The sixth staff is for the Vuv. (Trumpet) in treble clef, with a whole rest. The seventh staff is for the Cor Fa (Trumpet) in treble clef, with a whole rest. The eighth staff is for another Vuv. (Trumpet) in treble clef, with a whole rest. The ninth staff is for the Cui. (Cymbal) in treble clef, with a whole rest. The tenth staff is for the Uk. (Trombone) in treble clef, playing a continuous eighth-note melody. The eleventh staff is for the Bat. (Drum) in bass clef, with a whole rest. The twelfth staff is for the Xyl. (Xylophone) in treble clef, with a whole rest. The key signature has two flats (B-flat and E-flat), and the time signature is 4/4.

This musical score page, numbered 35, features ten staves for different instruments. The top staff is for the Organ (Org.) in treble clef, playing a continuous eighth-note melody. The second staff is for the Bassoon (B. él. Frtl.) in bass clef, with sparse notes and rests. The third and fourth staves are for the Organ (Org.) in bass clef, showing sustained notes with a fermata. The fifth staff is for the Clarinet in B-flat (Clar. Sib) in treble clef, featuring a quintuplet. The sixth and seventh staves are for the Trumpet in F (Vuv.) in treble clef, both containing rests. The eighth staff is for the Trombone in F (Cor Fa) in treble clef, with a few notes. The ninth staff is for the Ukulele (Uk.) in treble clef, playing a rhythmic eighth-note pattern. The tenth staff is for the Bass Drum (Bat.) in a drum clef, showing a complex rhythmic pattern. The eleventh staff is for the Xylophone (Xyl.) in treble clef, containing rests.

37

Org.

B. él. Frtl.

Org.

Clar. Sib

Vuv.

Cor Fa

Vuv.

Cui.

Uk.

Bat.

Xyl.

Detailed description: This page of a musical score covers measures 37 and 38. The key signature is B-flat major (two flats). The score includes parts for two Organ staves, Bassoon (B. él. Frtl.), Clarinet in B-flat (Clar. Sib), two Flutes (Vuv.), Horn in F (Cor Fa), Cymbals (Cui.), Ukulele (Uk.), Snare Drum (Bat.), and Xylophone (Xyl.). The Organ part (top) features a melodic line with eighth-note patterns and a chromatic descent. The Bassoon part has a few notes in the second measure. The Clarinet part has a melodic line with eighth notes and rests. The Ukulele part has a rhythmic accompaniment of eighth notes. The Snare Drum part has a simple pattern of quarter notes. The Xylophone part is mostly silent with rests. The Horn part has a melodic line with a long note in the second measure. The Flute parts are silent with rests. The second Organ part (bottom) provides harmonic support with chords in the bass clef.

Musical score for page 39, featuring various instruments. The score is written in a key signature of two flats (B-flat major or D-flat minor) and a common time signature. The instruments and their parts are:

- Org. (top):** Treble clef, playing a continuous eighth-note melody with some chromaticism.
- B. él. Frtl.:** Bass clef, playing a melodic line with a long note at the start.
- Org. (middle):** Bass clef, playing a sustained harmonic accompaniment with a long note.
- Clar. Sib:** Treble clef, playing a melodic line with eighth-note patterns.
- Vuv. (top):** Treble clef, playing a sustained harmonic accompaniment.
- Cor Fa:** Treble clef, playing a melodic line with a long note.
- Vuv. (middle):** Treble clef, playing a sustained harmonic accompaniment.
- Cui.:** Treble clef, playing a sustained harmonic accompaniment.
- Uk.:** Treble clef, playing a melodic line with eighth-note patterns.
- Bat.:** Percussion, playing a rhythmic pattern with a drumstick symbol.
- Xyl.:** Treble clef, playing a sustained harmonic accompaniment.

41

Org.

B. él. Frtl.

Org.

Clar. Sib

Vuv.

Cor Fa

Vuv.

Cui.

Uk.

Bat.

Xyl.

Detailed description: This page of a musical score covers measures 41 and 42. The key signature has two flats (B-flat and E-flat), and the time signature is 3/4. The score includes parts for two Organ staves, Bassoon (B. él. Frtl.), Clarinet in B-flat (Clar. Sib), two Trumpets (Vuv.), French Horn (Cor Fa), two Trombones (Vuv.), Cymbal (Cui.), Ukulele (Uk.), Snare Drum (Bat.), and Xylophone (Xyl.). The Organ parts feature complex rhythmic patterns with many sixteenth notes. The Clarinet part has a triplet in measure 42. The Snare Drum part has a complex rhythmic pattern with asterisks indicating specific drum sounds. The Ukulele part plays a steady eighth-note accompaniment.

Org.

B. él. Frtl.

Org.

Clar. Sib

Vuv.

Cor Fa

Vuv.

Cui.

Uk.

Bat.

Xyl.

Detailed description: This page of a musical score, numbered 43, features ten staves for different instruments. The top staff is for the Organ (right hand), showing a few notes and rests. The second staff is for the Bassoon (B. él. Frtl.), with a melodic line. The third staff is for the Organ (left hand), mostly containing rests. The fourth staff is for the Clarinet in B-flat (Clar. Sib), with a melodic line. The fifth staff is for the Flute (Vuv.), mostly containing rests. The sixth staff is for the Horn in F (Cor Fa), with a melodic line and a triplet of eighth notes. The seventh and eighth staves are for the Trumpet (Vuv.) and Trombone (Cui.), both playing chords and some melodic fragments. The ninth staff is for the Ukulele (Uk.), with a few notes and rests. The tenth staff is for the Snare Drum (Bat.), showing a rhythmic pattern with 'x' marks for hits. The eleventh staff is for the Xylophone (Xyl.), with a few notes and rests. The key signature has two flats (B-flat and E-flat), and the time signature is 4/4.

This musical score page, numbered 45, features ten staves for different instruments. The key signature is two flats (B-flat and E-flat), and the time signature is 4/4. The instruments and their parts are as follows:

- Org. (top):** Treble clef, mostly rests.
- B. él. Frtl.:** Bass clef, melodic line with slurs and accents.
- Org. (middle):** Two bass clef staves, mostly rests.
- Clar. Sib:** Treble clef, melodic line.
- Vuv. (first):** Treble clef, mostly rests.
- Cor Fa:** Treble clef, mostly rests.
- Vuv. (second):** Treble clef, melodic line with slurs and accents.
- Cui.:** Treble clef, melodic line with slurs and accents.
- Uk.:** Treble clef, mostly rests.
- Bat.:** Percussion staff with a drum set icon, showing a rhythmic pattern of snare and bass drum hits.
- Xyl.:** Treble clef, mostly rests.

46

Org.

B. él. Frtl.

Org.

Clar. Sib

Vuv.

Cor Fa

Vuv.

Cui.

Uk.

Bat.

Xyl.

3

7

5

3

7

Detailed description: This page of a musical score covers measures 46, 47, and 48. The score is for a full orchestra and includes parts for two organs, bassoon, clarinet in B-flat, two violins, French horn, two violas, cymbals, snare drum, and xylophone. The key signature has two flats (B-flat and E-flat), and the time signature is 3/4. Measure 46 features a bassoon and French horn playing a half note, while the clarinet plays a triplet of eighth notes. Measure 47 shows the bassoon and French horn playing a half note, with the clarinet playing a half note. Measure 48 is more complex, with the bassoon and French horn playing a half note, the clarinet playing a half note, and the xylophone playing a rhythmic pattern of eighth notes. The xylophone part includes a triplet of eighth notes, a quintuplet of eighth notes, and a septuplet of eighth notes. The snare drum part includes a triplet of eighth notes and a septuplet of eighth notes. The cymbals part includes a triplet of eighth notes and a septuplet of eighth notes. The two violins and two violas parts play a half note. The two organs play a half note. The bassoon and French horn parts play a half note. The clarinet part plays a half note. The xylophone part plays a rhythmic pattern of eighth notes. The snare drum part plays a rhythmic pattern of eighth notes. The cymbals part plays a rhythmic pattern of eighth notes. The two organs play a half note. The bassoon and French horn parts play a half note. The clarinet part plays a half note. The xylophone part plays a rhythmic pattern of eighth notes. The snare drum part plays a rhythmic pattern of eighth notes. The cymbals part plays a rhythmic pattern of eighth notes. The two organs play a half note. The bassoon and French horn parts play a half note. The clarinet part plays a half note. The xylophone part plays a rhythmic pattern of eighth notes. The snare drum part plays a rhythmic pattern of eighth notes. The cymbals part plays a rhythmic pattern of eighth notes.

47

Org.

B. él. Frtl.

Org.

Clar. Sib

Vuv.

Cor Fa

Vuv.

Cui.

Uk.

Bat.

Xyl.

Detailed description: This page of a musical score, numbered 47, contains ten staves for different instruments. The key signature has two flats (B-flat and E-flat). The top staff, labeled 'Org.', shows a treble clef with a whole rest followed by a sixteenth-note pattern. The second staff, 'B. él. Frtl.', has a bass clef with a whole note. The third staff, 'Org.', is a grand staff with two bass clefs, showing a whole note in the upper part and a half note in the lower part. The fourth staff, 'Clar. Sib', has a treble clef with a whole rest. The fifth staff, 'Vuv.', has a treble clef with a half note. The sixth staff, 'Cor Fa', has a treble clef with a whole note. The seventh staff, 'Vuv.', has a treble clef with a half note. The eighth staff, 'Cui.', has a treble clef with a whole rest. The ninth staff, 'Uk.', has a treble clef with a whole rest followed by a sixteenth-note pattern. The tenth staff, 'Bat.', has a drum set symbol with a whole note. The eleventh staff, 'Xyl.', has a treble clef with a complex rhythmic pattern including quintuplets and triplets.

48

Org.

B. él. Frtl.

Org.

Clar. Sib

Vuv.

Cor Fa

Vuv.

Cui.

Uk.

Bat.

Xyl.

Detailed description: This is a page of a musical score, page 48. It features ten staves for different instruments. The top staff is for the Organ (Org.) in the right hand, showing a melodic line with eighth notes and some accidentals. The second staff is for the B. él. Frtl. (Bassoon) in the left hand, with a few notes and a slur. The third and fourth staves are for the Organ (Org.) in the left hand, with a few notes and a slur. The fifth through ninth staves are for Clar. Sib (Clarinet in B-flat), Vuv. (Trumpet in B-flat), Cor Fa (Trumpet in F), Vuv. (Trumpet in B-flat), and Cui. (Cymbal), respectively, all showing rests. The tenth staff is for the Uk. (Tuba) in the right hand, showing a melodic line with eighth notes and some accidentals. The eleventh staff is for the Bat. (Bass Drum) showing rests. The twelfth staff is for the Xyl. (Xylophone) in the right hand, showing rests. The key signature has two flats (B-flat and E-flat), and the time signature is not explicitly shown but appears to be 4/4.

50

Org.

B. él. Frtl.

Org.

Clar. Sib.

Vuv.

Cor Fa

Vuv.

Cui.

Uk.

Bat.

Xyl.

This musical score page, numbered 52, features several instrumental parts. The top staff is for the Organ (Org.) in treble clef, playing a continuous eighth-note melody. Below it is the Bassoon (B. él. Frtl.) in bass clef, with a few notes and rests. The Organ part continues in two staves (bass clef), showing chordal accompaniment. The Clarinet in B-flat (Clar. Sib.) is in treble clef, playing a melodic line with a triplet of eighth notes. The Ukulele (Uk.) is in treble clef, playing a rhythmic eighth-note pattern. The Bass Drum (Bat.) is in a drum staff, showing a rhythmic pattern with eighth notes and rests. The Xylophone (Xyl.) is in treble clef, with rests. The Cor Anglais (Cor Fa) is in treble clef, playing a melodic line with some grace notes. The Violins (Vuv.) are in treble clef, with rests. The Cymbals (Cui.) are in treble clef, with rests.

Musical score for page 54, featuring the following instruments and parts:

- Org. (top):** Treble clef, playing a melodic line with eighth notes and a key signature of one flat.
- B. él. Frtl. (second):** Bass clef, playing a melodic line with a key signature of one flat.
- Org. (third):** Bass clef, playing a sustained harmonic accompaniment with a key signature of one flat.
- Clar. Sib (fourth):** Treble clef, playing a melodic line with a key signature of one flat.
- Vuv. (fifth):** Treble clef, playing a sustained harmonic accompaniment with a key signature of one flat.
- Cor Fa (sixth):** Treble clef, playing a melodic line with a key signature of one flat.
- Vuv. (seventh):** Treble clef, playing a sustained harmonic accompaniment with a key signature of one flat.
- Cui. (eighth):** Treble clef, playing a sustained harmonic accompaniment with a key signature of one flat.
- Uk. (ninth):** Treble clef, playing a melodic line with a key signature of one flat.
- Bat. (tenth):** Percussion staff, showing a drum pattern with a key signature of one flat.
- Xyl. (eleventh):** Treble clef, playing a sustained harmonic accompaniment with a key signature of one flat.

56

Org.

B. él. Frtl.

Org.

Clar. Sib

Vuv.

Cor Fa

Vuv.

Cui.

Uk.

Bat.

Xyl.

Detailed description: This page of a musical score covers measures 56, 57, and 58. The score is for a variety of instruments. The top staff is for the Organ, playing a continuous eighth-note pattern in the right hand and a slower bass line in the left hand. Below it is the Bassoon (B. él. Frtl.) with a few notes. The Organ continues with a more complex texture in the lower register. The Clarinet in B-flat (Clar. Sib) has a melodic line with a triplet in measure 58. The Trumpets (Vuv.) and Horns (Cor Fa) have block chords. The Ukulele (Uk.) plays a rhythmic accompaniment. The Drum (Bat.) and Xylophone (Xyl.) are mostly silent, with some light percussion in measure 58.

Org.

B. él. Frtl.

Org.

Clar. Sib

Vuv.

Cor Fa

Vuv.

Cui.

Uk.

Bat.

Xyl.

Detailed description: This page of a musical score, numbered 58, contains ten staves for different instruments. The top staff is for the Organ (Org.) in treble clef, playing a melodic line with eighth and sixteenth notes. The second staff is for the Bassoon (B. él. Frtl.) in bass clef, playing a similar melodic line. The third staff is for the Organ (Org.) in bass clef, providing harmonic support with sustained notes. The fourth staff is for the Clarinet in B-flat (Clar. Sib) in treble clef, playing a melodic line. The fifth staff is for the Vuv. (likely a woodwind instrument) in treble clef, playing a melodic line. The sixth staff is for the Horn in F (Cor Fa) in treble clef, playing a melodic line. The seventh staff is for the Vuv. (likely a woodwind instrument) in bass clef, playing a melodic line. The eighth staff is for the Cui. (likely a woodwind instrument) in bass clef, playing a melodic line. The ninth staff is for the Uk. (likely a woodwind instrument) in treble clef, playing a melodic line. The tenth staff is for the Bat. (likely a woodwind instrument) in bass clef, playing a melodic line. The eleventh staff is for the Xyl. (likely a woodwind instrument) in treble clef, playing a melodic line. The score includes various musical notations such as notes, rests, and dynamic markings.

60

Org.

B. él. Frtl.

Org.

Clar. Sib

Vuv.

Cor Fa

Vuv.

Cui.

Uk.

Bat.

Xyl.

Detailed description: This page of a musical score covers measures 60 and 61. The key signature has two flats (B-flat and E-flat). The score includes parts for two Organ staves (one Treble, one Bass), Bassoon (B. él. Frtl.), Clarinet in B-flat (Clar. Sib), Trumpets (Vuv.), Horns in F (Cor Fa), Trombones (Vuv.), Cymbals (Cui.), Ukulele (Uk.), Drums (Bat.), and Xylophone (Xyl.). Measure 60 shows the beginning of the piece with various rhythmic patterns and melodic lines. Measure 61 continues the development, featuring a prominent five-note quintuplet in the Clarinet part and a triplet in the Horns part. The percussion parts provide a steady rhythmic accompaniment.

62

Org.

B. él. Frtl.

Org.

Clar. Sib

Vuv.

Cor Fa

Vuv.

Cui.

Uk.

Bat.

Xyl.

5

7

5

5

3

63 $\text{♩} = 67$ $\text{♩} = 65$ $\text{♩} = 63$ $\text{♩} = 61$ $\text{♩} = 59$ $\text{♩} = 57$

Org.

B. él. Frtl.

Org.

Clar. Sib

Vuv.

Cor Fa

Vuv.

Cui.

Uk.

Bat.

Xyl.

66

$\text{♩} = 73$

The image shows a page of a musical score for measures 66 and 67. The tempo is marked as $\text{♩} = 73$. The score includes the following parts:

- Org. (top):** Organ part in treble clef, B-flat major key signature.
- B. él. Frtl.:** Bassoon part in bass clef, B-flat major key signature.
- Org. (middle):** Organ part in bass clef, B-flat major key signature.
- Clar. Sib:** Clarinet in B-flat part in treble clef, B-flat major key signature.
- Vuv. (top):** Trumpet part in treble clef, B-flat major key signature.
- Cor Fa:** Horn in F part in treble clef, B-flat major key signature.
- Vuv. (bottom):** Trumpet part in treble clef, B-flat major key signature.
- Cui.:** Cymbal part in treble clef, B-flat major key signature.
- Uk.:** Ukulele part in treble clef, B-flat major key signature.
- Bat.:** Drum part in bass clef, B-flat major key signature.
- Xyl.:** Xylophone part in treble clef, B-flat major key signature.

Measures 66 and 67 are marked with a double bar line at the end of each staff, indicating the end of the section.